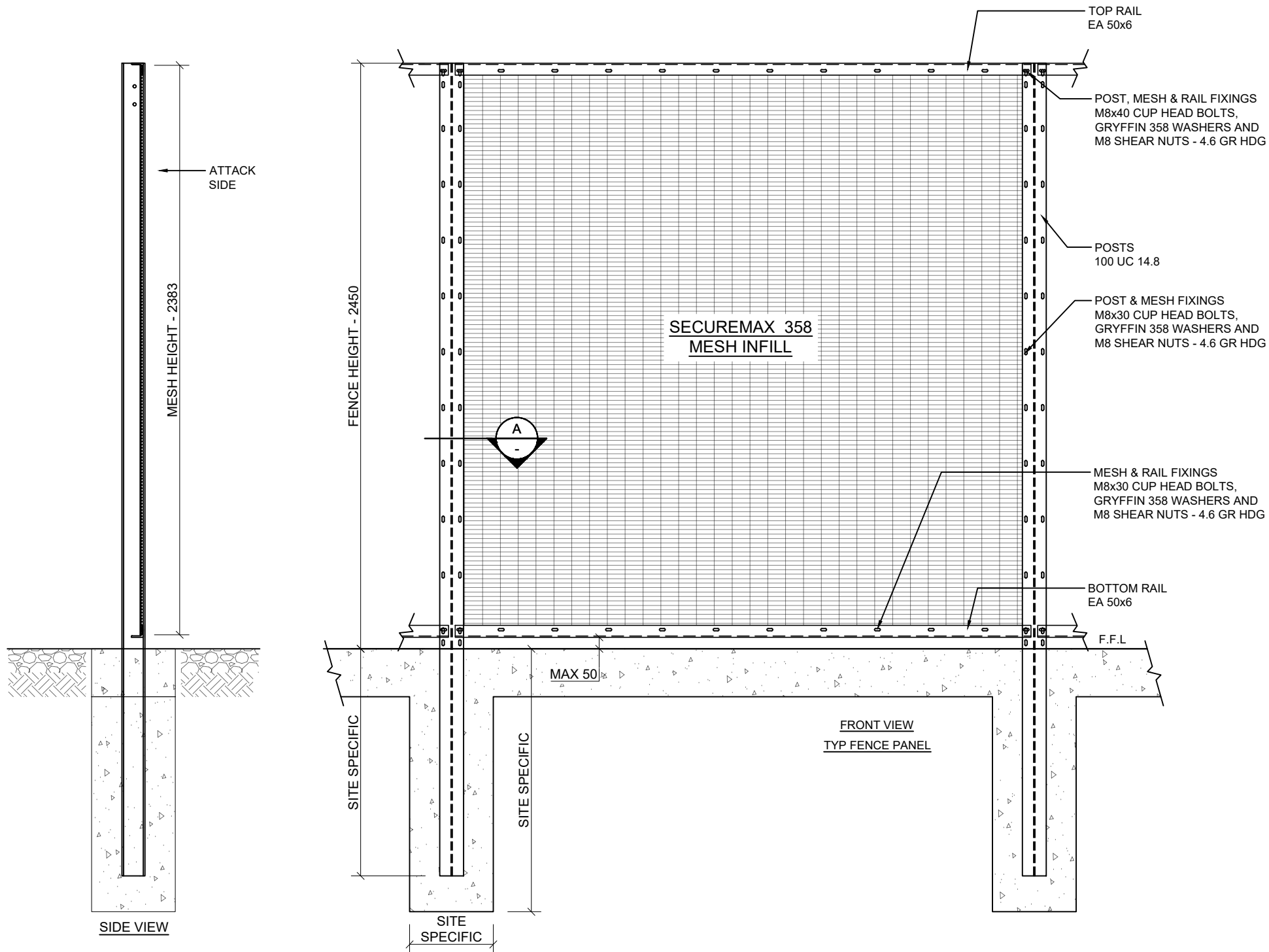
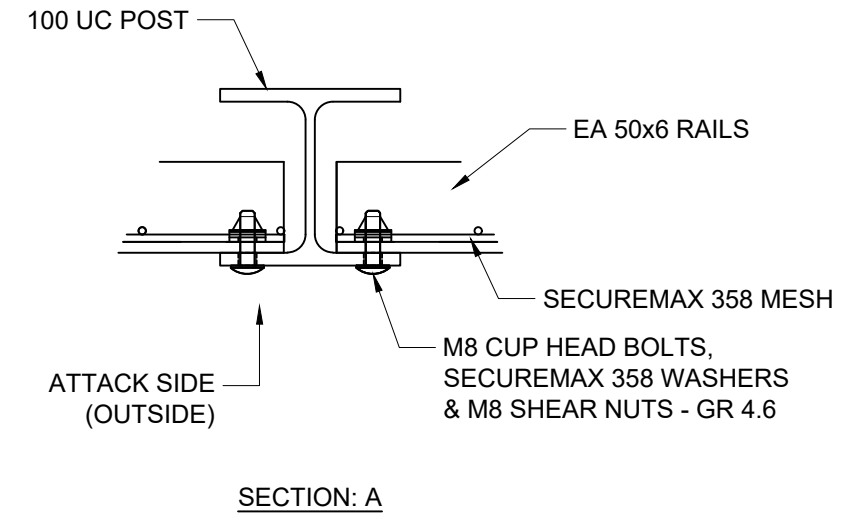
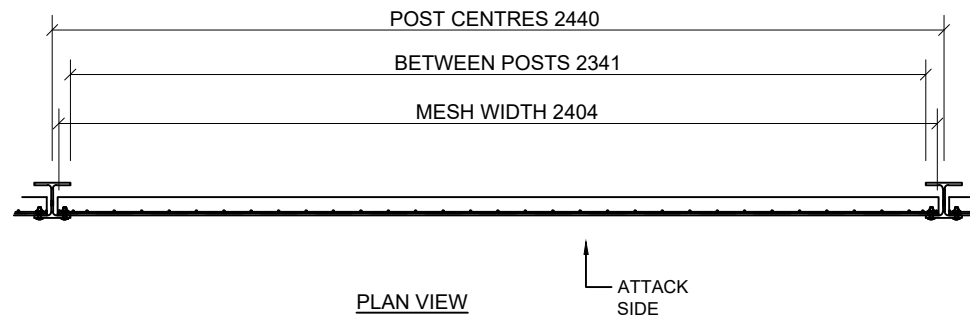


"SECUREMAX 358" FENCE



NOTE:

- * SECUREMAX 358 MESH PANEL 2383 HIGH x 2404 WIDE ALLOWS FOR 18mm MAX FALL PER PANEL (0.43°)
- * LONGER MESH PANELS REQUIRED FOR FALLS GREATER THAN 18mm PER PANEL
- * ALL SITE CUTS TO BE TREATED AS PER AUSTRALIAN STANDARD AS 4680-2006
- * ALL MESH FASTENERS/WASHERS MUST BE SEATED CORRECTLY AND WITHIN CLOSED VERTICAL AND HORIZONTAL MESH APERTURES.

Standard Fence Panel:
Securemax® 358 4mm dia. wire is procured via AS/NZS 4534-2006. The manufacturing standard within the ASF Quality Plan is EN 10223.4-2012 for high security applications and AS 2423-2006 for general mesh use. Zinc/Alloy is a high anti-corrosive surface finish applied to a 4mm medium tensile wire. In external atmospheric conditions, a zinc/5% aluminium coating offers from two to four times greater protection per unit coating mass than hot dipped galvanised steel.

Standard Fence Post:
100UC - 14.8 kg/m or similar. Grade 300 plus, Minimum tensile strength 440 MPa. Material to Australian Standard AS 3679.1-300.

Standard Fence Rails
Equal Angle 50 x 50 x 6mm - 4.46 kg/m.

Posts and Rails Hot dip galvanized after fabrication to A.S. 4680 - 2006.



This drawing includes the principles of design and is submitted by **GRYFFIN PTY LTD** with the agreement that it not to be reproduced, copied or loaned in part or whole. It is not to be used in any manner that may constitute a detriment directly or indirectly to **GRYFFIN PTY LTD**. Acceptance of this drawing will be constructed as an agreement to the above.

GRYFFIN PTY LTD
8 Bessemer Road
Bayswater, Victoria - 3153
Telephone: (03) 8720 9400
Email: sales@gryffin.com.au

Dwg No:
SMAx-GRY-SMAx-2.4-GA

Drawn: KP	Checked: JWR	Approved: SJR
Date: 04/12/2024	Scale: NTS	

"SECUREMAX 358" FENCE
GENERAL ARRANGEMENT

A/O No:
00000

Sheet:

Rev:
A